



Hydraulic Rotary Coupling Single Passage

Description :

Rotary couplings supply the pressurised oil to the rotating and swiveling installations. They are mounted in the center of rotation of the installations.

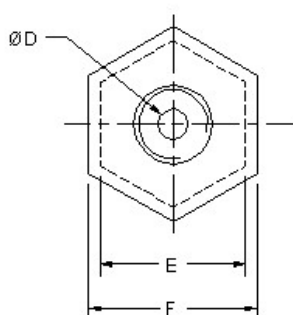
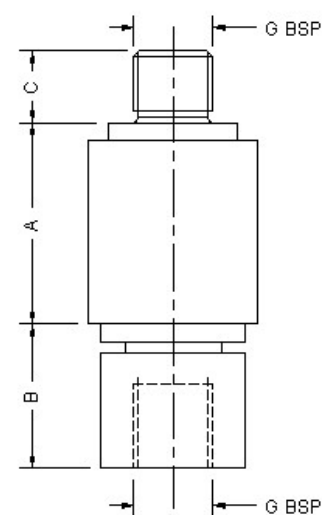
Specifications :

- Operating Speed 5 RPM in unpressurized mode.
- Maximum Operating pressure 250 bar in static mode.

Notes :

- This coupling is suitable for rotary indexing table rotating at low speed (5 RPM in pressurized mode).
- This coupling is not suitable for continuous rotation and can be used for intermittent rotation of 90 or 180 degree.
- For ordering the seal kit, add the prefix "S" to the part number.

Dimensional details :



PART NO.	4500045	4500047
A	33.4	33.4
B	24	24
C	12	12
D	5	10
E	24	24
F	30	30
G	1/4"	3/8"

All dimensions are in mm, Overall dimension tolerance ± 0.5 mm.
Subject to change for improvement. (Revision - July12)

Application Example :

